

| SPECIFICATION

Unit: mm

ITEM		HT-860		HT-960		HT-1120		HT-1220	
MODEL		1000	1500	2000	3000	4000	5000	6000	7000
CAPACITY	Swing over bed	860		960		1120		1220	
	Swing over cross slide	540		640		800		900	
	Swing over gap	1200		1300		1460		1560	
	Distance between centers	1000	1500	2000	3000	4000	5000	6000	7000
BED	Width of bed	510							
	Length of gap (Spindle end face)	240							
	Length of bed	3300	3800	4300	5300	6300	7300	8300	9300
HEADSTOCK	Spindle bore	Ø105 (4")		OP:152 (6")		OP: 152 (6")			
	Spindle nose	A2-8		A2-11		A2-11			
	Number of spindle speeds	12		12		16			
	Range of spindle speeds	23~1300		16~810		4~420			
CARRIAGE	Width of carriage	660							
	Cross slide travel	510							
	Compound rest travel	370							
	Max. size cutting size	32 x 32							
TAILSTOCK	Diameter of barrel	Ø125							
	Travel of barrel	300							
	Taper of barrel	MT# 6							
THREADS	Lead screw diameter & pitches	Ø45x12 mm							
	Range of metric pitches	0.8~14 mm (65 Nos)							
	Range of inch pitches	2~28 T.P.I. (36 Nos)							
	Range of diametral pitches	4~56 D.P. (36 Nos)							
	Range of module pitches	0.5~7 M.P. (22 Nos)							
FEEDS	Fed rod diameter	32							
	Range of longitudinal feeds	0.050 ~ 0.70 mm/rev							
	Range of cross feeds	0.025 ~ 0.35 mm/rev							
MOTOR	Main spindle motor	15 HP		OP: 20 HP		OP: 6" 20 HP			
	Coolant pump motor	1/8 HP							
	Rapid motor	1/4 HP							
MACHINE SIZE	Machine size (L)	3600	4100	4600	5600	6600	7600	8600	9600
	Machine size (WxH)- without back splash guard	W: 1550 x H: 1500 (HT-860) / 1550 (HT-960) / 1630 (HT-1120) / 1680 (HT-1220)							
		The width of machine size with back splash guard: 1800							
MEASUREMENT	HT-860	6900/7000	7200/7350	7500/7700	8100/8400	8700/9100	9300/9800	9900/10500	10500/11200
	HT-960	7150/7250	7450/7600	7750/7950	8350/8650	8950/9350	9550/10050	10150/10750	10750/11450
	HT-1120	7550/7650	7700/7850	8000/8200	8600/8900	9200/9600	9800/10300	10400/11000	11000/11700
	HT-1220	7800/7900	7950/8100	8250/8450	8850/9150	9450/9850	10050/10550	10650/11250	11250/11950
	Packing size (L)	3900	4400	4900	5900	6900	7900	8900	9900
	Packing size (WxH)- without back splash guard	W: 1900 x H: 1900 (HT-860) / 1950 (HT-960) / 2030 (HT-1120) / 2080 (HT-1220)							
		The width of machine size with back splash guard: 2100							
STANDARD COLOR		RAL-9022 LIGHT GRAY							

*We reserve the right to modify and improve our products without notice.

DENVER INDUSTRIAL CO.,LTD.

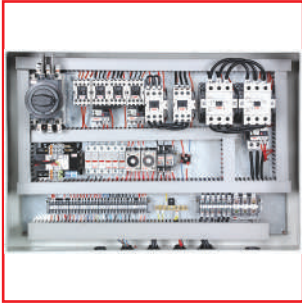
258, Lane 986, Sec 1, Shi Nan Rd., Wu Jih, Taichung Hsien, 41464 Taiwan
TEL :886-4-2335-4989 FAX:886-4-2335-4969
e-mail:denver@ms77.hinet.net http://www.topdenver.com



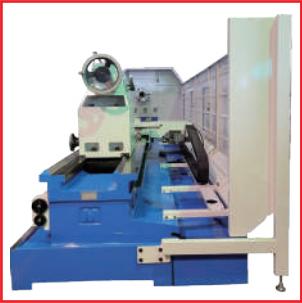
http://www.topdenver.com

2025.01

| OPTIONAL ACCESSORIES



OP1-1
CE equipment



OP1-5
Back splash guard



OP2
Follow rest



OP3
4-jaw independent chuck



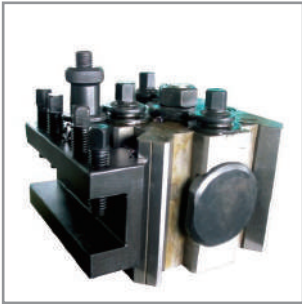
OP4
3-jaw strong scroll chuck



OP5
Steady rest ø16", ø20"



OP8
Taper turning attachment



OP9
Quick change tool post



OP10
Grinder



OP11
Boring attachment



OP12
Double chuck

STANDARD ACCESSORIES :

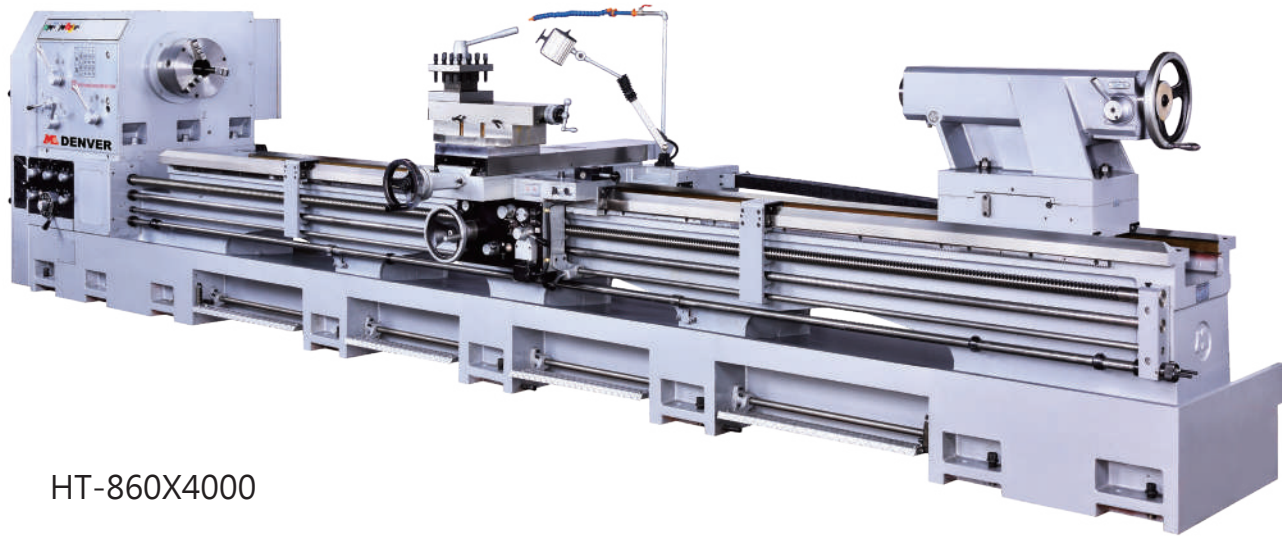
1. XZ-axis auto. lubrication system
 2. Metric / Inch gear box
 3. Longitudinal and cross rapid feeding
 4. Coolant device
 5. Longitudinal adjustable position feed stop
 6. Tailstock two steps device -taper MT#6
 7. 3-jaw scroll chuck SC-12"
 8. Back plate of chuck
 9. Steady rest 11.5"
 10. Center sleeve MT#6
 11. Dead center 2 pcs
 12. Toolpost screw wrench
 13. Level pads
 14. Tools & tool box
 15. Operation manual
- PS. Electromagnetic brake for spindle bore
6", 9", 10", 12"

OPTIONAL ACCESSORIES :

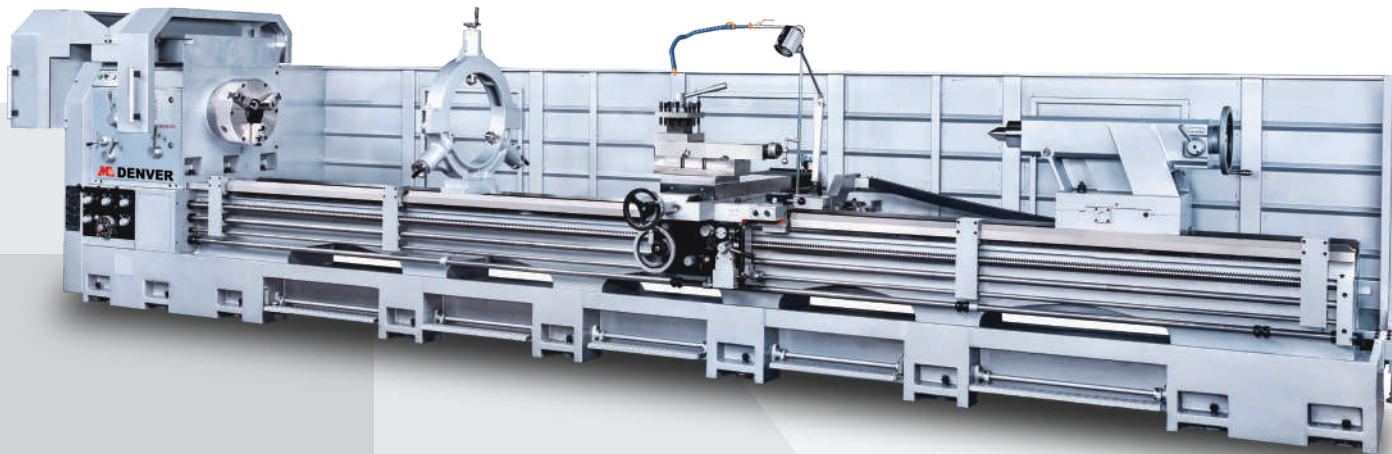
- 1.CE equipment
 - ①CE electricity
 - ②Chuck guard
 - ③Toolpost guard
 - ④Leadscrew cover
 - ⑤Back splash guard
 2. Follow rest
 3. 4-jaw independent chuck
 4. 3-jaw strong scroll chuck
 5. Steady rest ø16", ø20"
6. Halogen light
 7. Digital readout
 8. Taper turning attachment
 9. Quick change tool post
European quick change toolpost
(instead of 4-way tool post)
 10. Grinder
 11. Boring attachment
 12. Double chuck
 13. Rear chuck guard

DENVER

HEAVY DUTY LATHE
HT series



HT-860X4000



HT-860x5000



http://www.topdenver.com



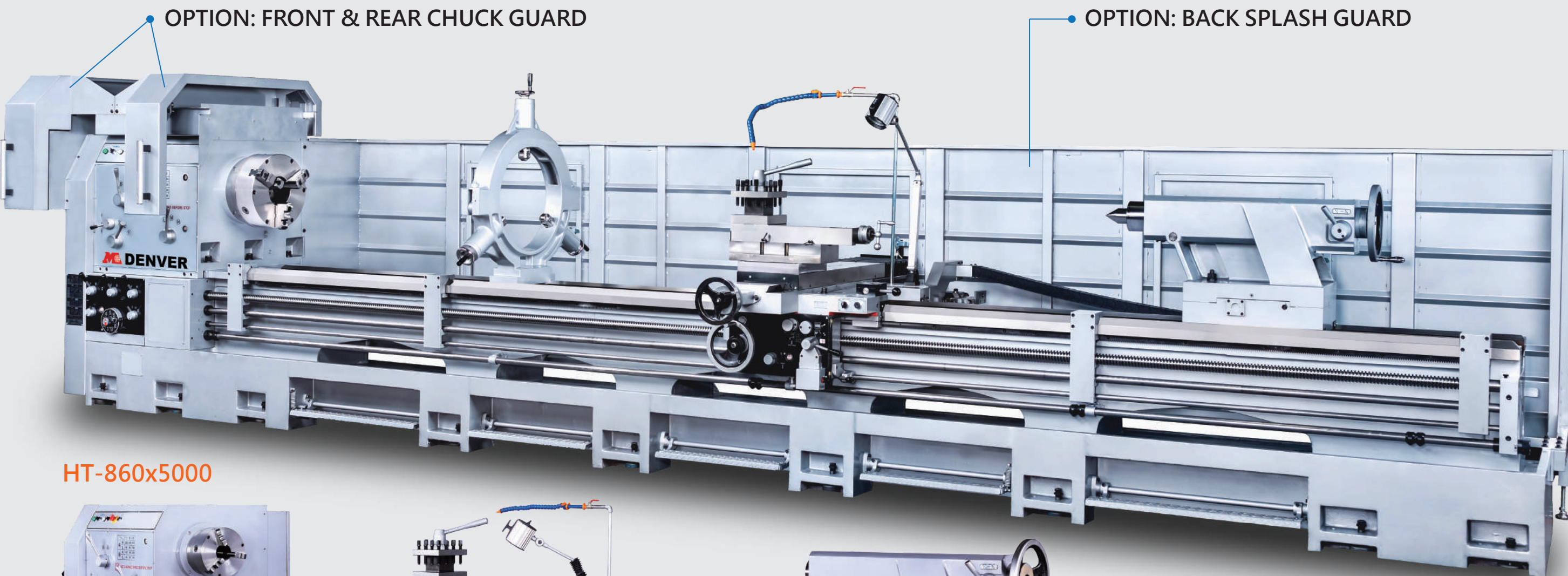
DENVER

HT-860,960,1120,1220X

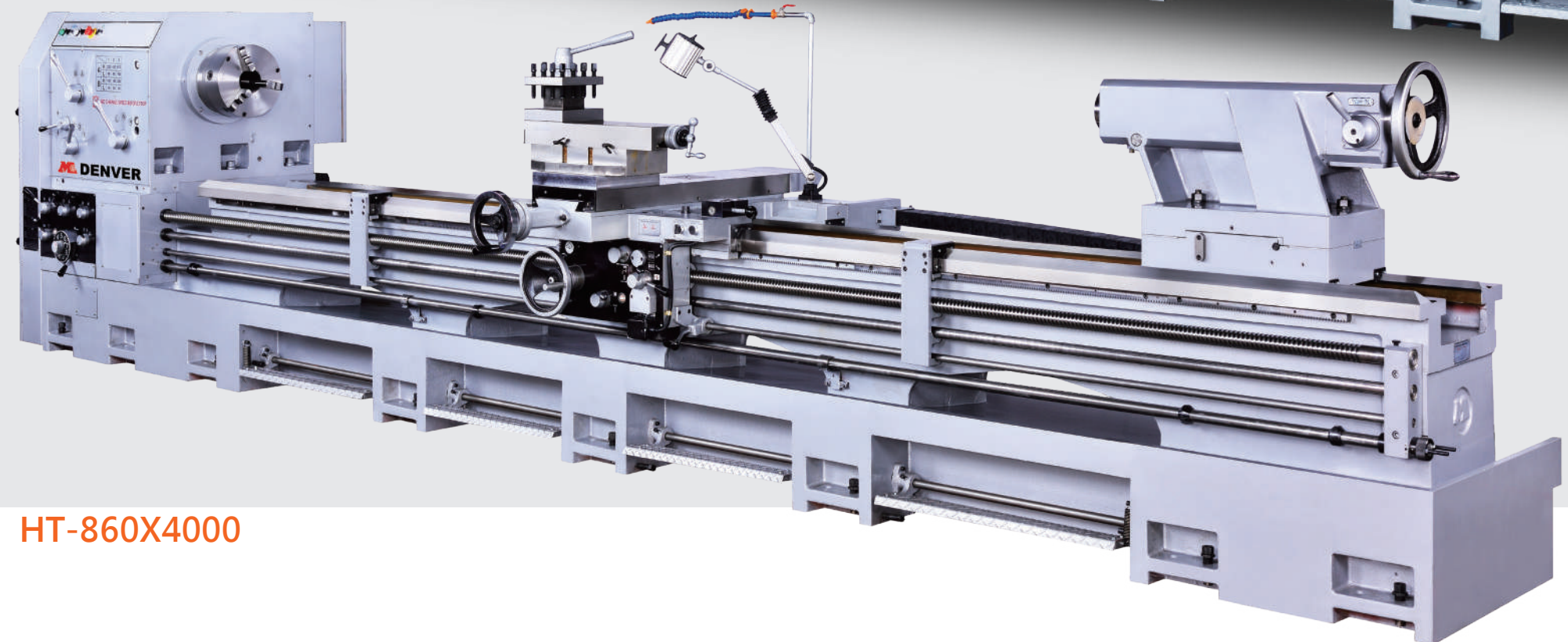
1000,1500,2000,3000,4000,5000,6000,7000

SPINDLE BORE : 4", 6"

BED WIDTH : 510 mm / 20"



HT-860x5000



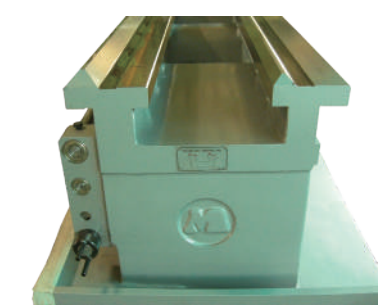
HT-860X4000

It is suitable for turning and cutting of large work piece and steel rod materials for heavy industries like oil pipe network, aerospace and heavy-duty shaft processing.



SPINDLE & HEADSTOCK

- Spindle bore 105mm (4") or 152mm (6 "), 12-step speed change, turbine speed change mechanism with no easy speed jumping and three point support for the box.
- Spindle bore 6" or more are fitted with adjustable, electromagnetic brake for easy braking adjustment according to different work piece materials and speed.
- Gear and shaft are made of super alloy material with NSK bearings to offer durable cutting and low production noise.
- Sealed oil bath lubrication system with enforced oil supply by mechanical pump to achieve better lubrication effects.
- Photo shown headstock with spindle bore 152mm (6")/speed 12 steps.



BASE :

- The structure of bed is adopted high toughness Meehanite cast iron; stabilize properly parallel precision. Bed ways are induction hardened and ground.
- One -piece casting base for processing capacity to be more stable.



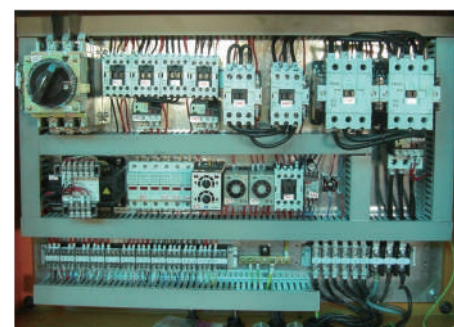
Gear Box :

Adopt quick-change universal metric/inch gearbox for inch,metric, DP, MP, threading and multiple threads, all function is reached without any change gear, wide and complete range of threads and operating easily to improve production efficiency.



Tailstock :

Two stage feeding device, installed with saddle- tailstock device for tailstock body easy moved smoothly and labor saving operation



Electric component :

20HP motor, 2 stage safety startup device and overloading power cut system.

Apron :

Equipped with rapid feeding device, forward and reverse movement, and a safety device, with automatic sealing oil bath lubrication and cross rapid feeding.

Saddle :

Anti-friction processed surface with regular oilinjection, lubricated and friction endurable

Casting :

The main material of main structures like base, spindle, saddle and tailstock are all made of FC-30 steel, which are annealed, not deformed.

Processing :

Base, spindle, saddle, dovetail slot surface of cross slide, top slide and tailstock quill are high frequency treated, precision ground for extending service life.